



PresenterTek Stand Controller Software User Guide

06/08/2021

Overview

The PresenterTek Stand Controller Software is a Microsoft Windows application that allows the user to control up to 8 TeleStepper robotic stands from a PC. Stands can be daisy-chained from 1 to 8 individual stands. A database window allows for the user to preset stands heights for individual speakers. The handheld remote can only handle up to 4 individual stands. The PresenterTek software also has a more intuitive interface for operating individual stands independently.

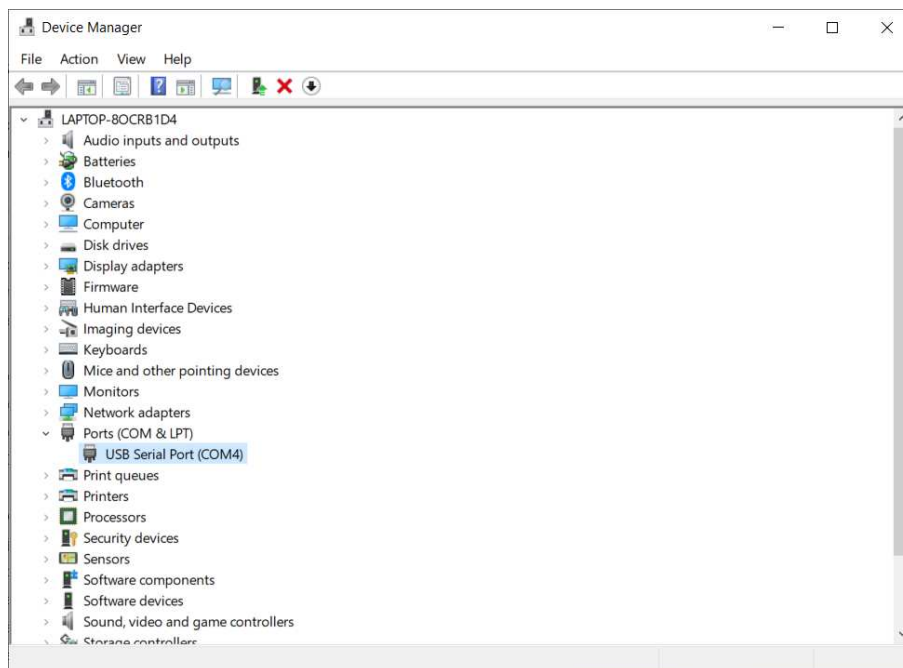
A RS485/USB converter box is required

Installation

Download the install files, Setup.msi. Double click on Step.msi to install

USB/RS485 Converter Box setup

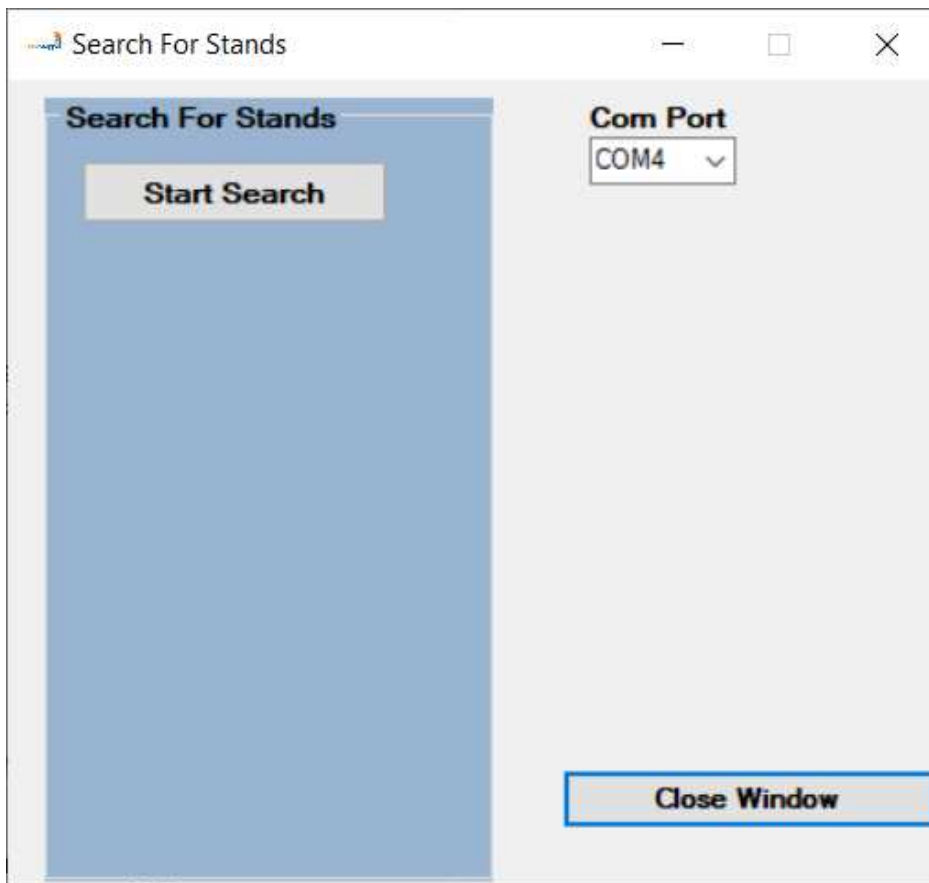
Once the USB end is plugged into the PC., Window should automatically search for the driver and install it. To verify correct installation, Open Device Manager in Windows, Note the USB Serial Port (COM4). If there is a problem, you can manually download the driver by going to FTDI, Future Technology Devices International. <https://www.ftdichip.com/Products/Cables/USBRS485.htm>



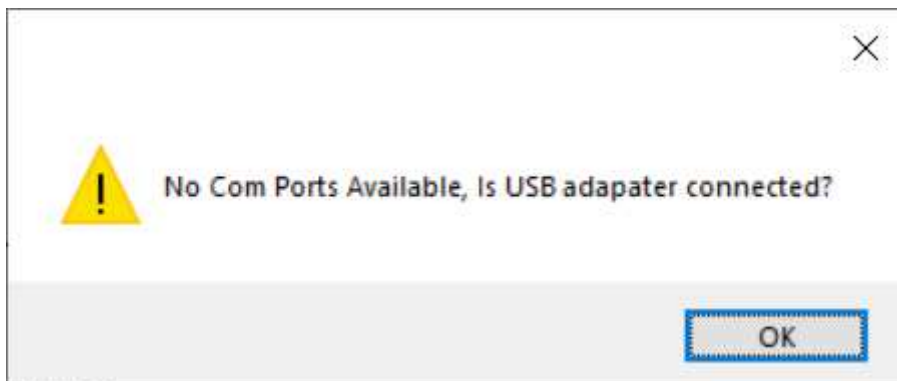
Note: The Screen shots below are for a 6 Stand setup, The PresenterTek Stand Controller can handle anywhere from 1 to 8 stands

Initial Launch: Search For Stands window

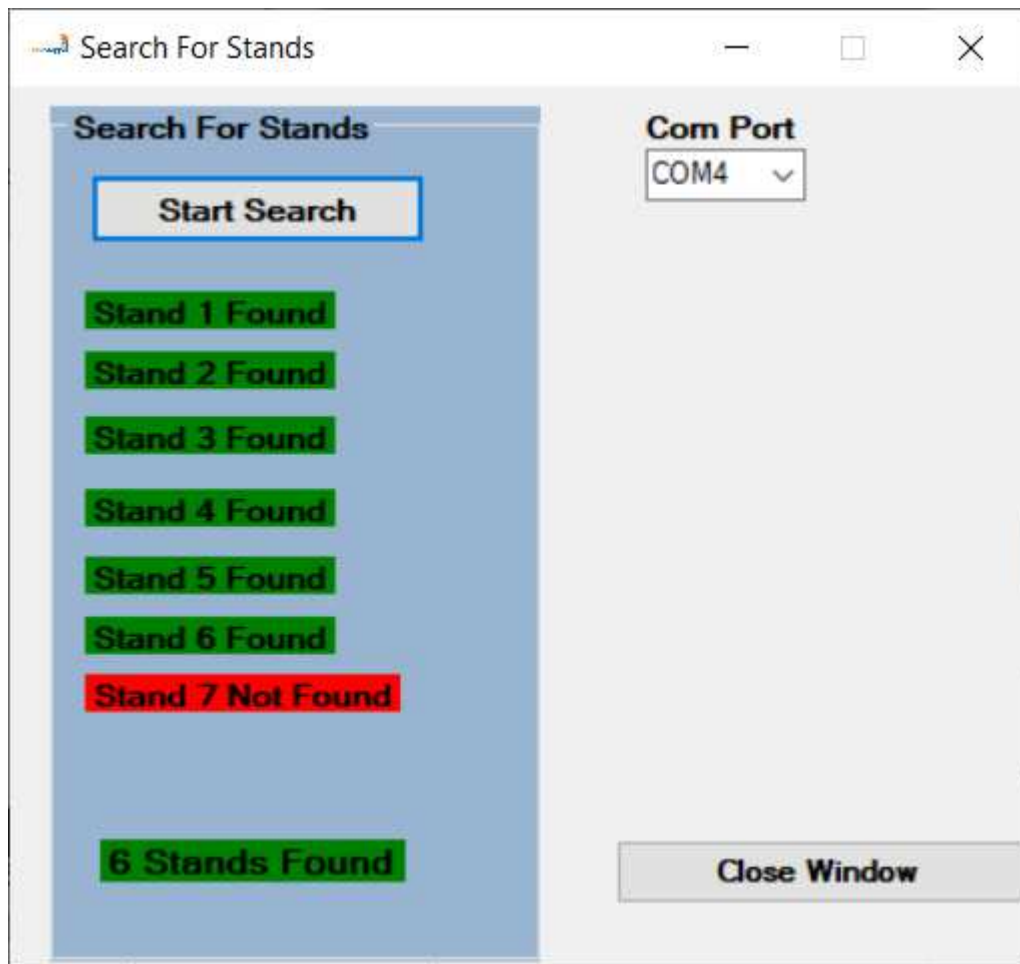
When the software is first launched, the "Search For Stands" window will automatically appear. Note the Com Port = COM4 is what was shown in the Device Manager. If there is more than one COM PORT, the correct port must be selected using the drop-down menu.



Note: if the USB/485 Converter box is not connected or installed correctly, the following box will pop-up:

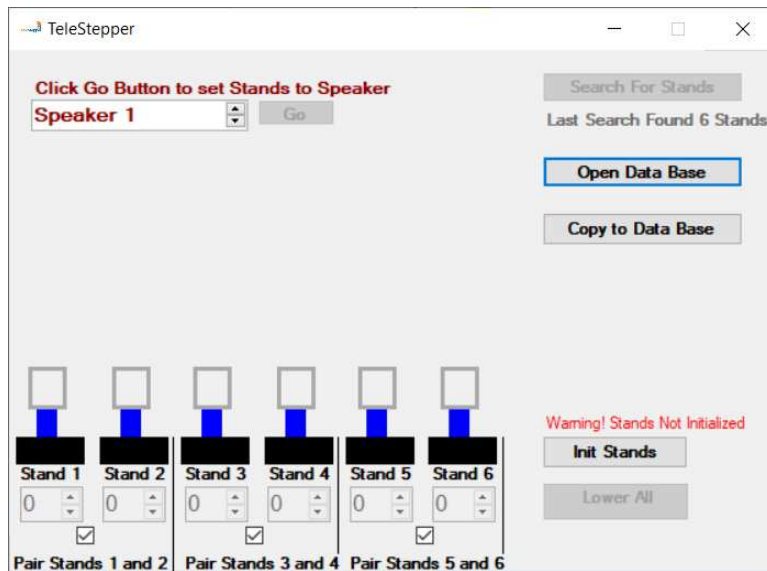


Click the "Start Search" button, the following will appear:

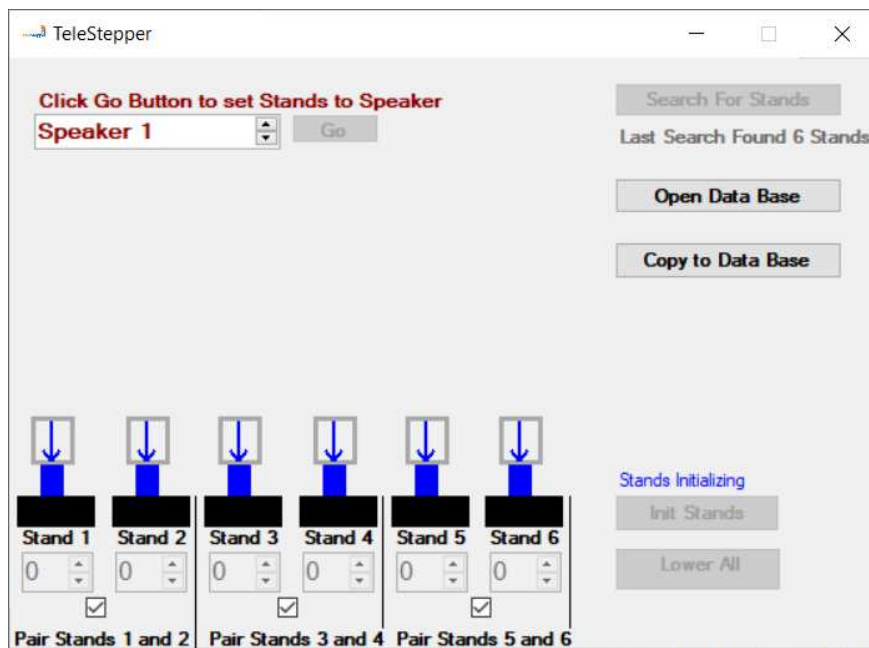


Since in our example, we only have 6 stands, Stand 7 was not found. This number of stands is stored non-volatilely, that is, if the application is closed and re-opened, it will retain this number of stand. Invoking the Search is only necessary if the number of stands has changed, to check the setup of the stands, or if communication errors occur during operation

Stand Initialization



Note the “Warning Stands not initialized” message, operation of the stands is not allowed until initialization occurs when the “Init Stands” button is clicked. When clicked, the form will look like:



Stands only have to be Initialized once after power up. Upon launching the PresenterTek Stand Controller software, it will check if the stands have been initialized. If power is interrupted to the Stands while the software is running, any attempt to move the stands will result in the Stand Not Initialized Warning

Note, the Blue Up/Down arrow inside the Stand image indicated that the Stand is in motion

Main Window

TeleStepper

Click Go Button to set Stands to Speaker

Speaker 1

Search For Stands

Last Search Found 6 Stands

Open Data Base

Copy to Data Base

Init Stands

Lower All

Stand 1: 5 ☒

Stand 2: 5 ☒

Stand 3: 2 ☒

Stand 4: 2 ☒

Stand 5: 7 ☒

Stand 6: 7 ☒

Pair Stands 1 and 2 Pair Stands 3 and 4 Pair Stands 5 and 6

Control	Description
Stand1 Up/Down	Display current Stand1 Height. If clicked will move Stand1 up or down in 1" increments. Desired height can also be typed in the box. If Pair Stands 1 and 2 box is checked, Both Stands 1 and 2 will move as a pair. Otherwise, Stand 1 will move individually. The desired height can also be input to the box directly for faster operation, valid entries 0-24
Stand2 Up/Down	Display current Stand2 Height. If clicked moves Stand2 up or down in 1" increments. Desired height can also be typed in the box. If Pair Stands 1 and 2 box is checked, Both Stands 1 and 2 will move as a pair. Otherwise, Stand 2 will move individually. The desired height can also be input to the box directly for faster operation, valid entries 0-24
Stand3 Up/Down	Display current Stand3 Height. If clicked, moves Stand3 up or down in 1" increments. Desired height can also be typed in the box. If Pair Stands 3 and 4 box is checked, Both Stands 3 and 4 will move as a pair. Otherwise, Stand 3 will move individually. The desired height can also be input to the box directly for faster operation, valid entries 0-24
Stand4 Up/Down	Display current Stand4 Height. If clicked, moves Stand4 up or down in 1" increments. Desired height can also be typed in the box. If Pair Stands 3 and 4 box is checked, Both Stands 3 and 4 will move as a pair. Otherwise, Stand 4 will move individually. The desired height can also be input to the box directly for faster operation, valid entries 0-24
Stand5 Up/Down	Display current Stand5 Height. If clicked, moves Stand5 up or down in 1" increments. Desired height can also be typed in the box. If Pair Stands 5 and 6 box is checked, Both Stands 5 and 6 will move as a pair. Otherwise, Stand 5

	will move individually. The desired height can also be input to the box directly for faster operation, valid entries 0-24
Stand6 Up/Down	Display current Stand6 Height. If clicked, moves Stand6 up or down in 1" increments. Desired height can also be typed in the box. If Pair Stands 5 and 6 box is checked, Both Stands 5 and 6 will move as a pair. Otherwise, Stand 6 will move individually. The desired height can also be input to the box directly for faster operation, valid entries 0-24
Stand7 Up/Down	Not shown above, but same as other Stand Up/Down operation
Stand8 Up/Down	Not shown above, but same as other Stand Up/Down operation
Init Stands	Initializes the Stands to the lowest or 0 position. Stands only have to be Initialized once after power up. Upon launching the PresenterTek Stand Controller software, it will check if the stands have been initialized. If power is interrupted to the Stands while the software is running, any attempt to move the stands will result in the Stand Not Initialized Warning
Lower All	Moves all Stands to lowest or 0 position
Go	Goes to preset position described in the Speaker Box. Presets are defined and stored in the Data Base window. Once Go is clicked, Stands will move to preset positions and the Speaker name will turn Green
Speaker Box	Selects the desired preset Speaker heights as defined and stored in the Data Base window
Search For Stands	Opens the Search for Stands window. The number of previously found Stands is displayed. Only needs to be invoked if Stand configuration has changed and for checking operation after setup
Open Data Base	Opens Data Base window
Copy to Data Base	Copies current Stand height settings and add a new entry, labeled "New Speaker 1" into the Data Base

Data Base Window

Defines and stores the preset speaker heights, used in the Main Form, for each stand.
Additions to the Data Base can also be made via the “Copy to Data Base” button on the Main Form

Run Order	Identifier	Stand 1	Stand 2	Stand 3	Stand 4	Stand 5	Stand 6
1	Speaker 1	1	2	1	1	1	1
2	Speaker 2	5	6	2	2	2	2
3	Speaker 3	8	9	5	5	5	5
4	Speaker 4	10	11	10	10	10	10

Buttons: Add Row, Delete Row, Move Row Up, Move Row Down, Save, Close

Control	Description
Add Row	Adds a new Row to the bottom
Delete Row	Deletes selected Row
Move Row Up	Moves selected Row Up
Move Row Down	Moves selected Row Down
Save	Saves Data Base
Close	Closes form and saves Data Base
Run Order	Order in which the names will appear in the Main Form's Speaker Box
Identifier	Name that will appear in the Main Form's Speaker Box
Stand1 – Stand 6	Preset Stand Height (0-24)
Stand 7 and Stand 8	Not shown here, but same as Stand1- Stand6 preset heights

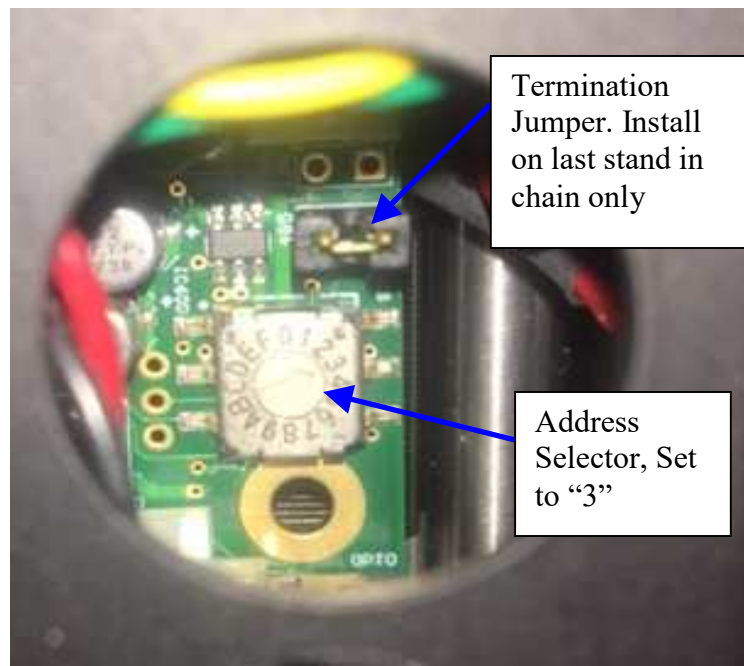
Advanced User Setup—Ceiling mount stand operation

Double Clicking on the PresenterTek Vxx.x.x label at the bottom of the main window will launch an Advanced User Menu. Checking the Ceiling Mount option will allow for ceiling mounted stands. The PTZ Mover has a ceiling mount option.

Stand Cabling Setup

Note, there are two type of stands, referred to as Master and Slave, The Master stand has 2 RJ45/Ethernet connectors, a "Remote Control" connector in addition to the "Stand" connector. Slave stands only have the "Stand" connector.

- 1) Set each stand's address switch and Termination Jumper
 - a. Before accessing the address switch or termination jumper, make sure the power is disconnected
 - b. Remove plug on back of stand to expose the address switch and termination jumper
 - c. First stand in chain, set to address 1.
 - d. Next stand, set to address 2, remove termination jumper
 - e. Next stand, set to address 3 and so on. Use sequential addressing, Address 1 for the first Master stand, 2 for the second stand, 3 for the next and so on
 - f. Address is set using the rotary switch on the back of the stand. Remove the plug and turn the switch using a small screw driver. In the figure below, Stand is set to address of 3
 - g. Valid address switch setting are "1" through "E". Do not use address "0" or "F". One stand must always have Address 1 and any daisy-chained stands must be addressed in sequential fashion, 1,2,3 ... Each stand must have a unique address
 - h. Install the termination jumper on the last stand in the chain as shown below. Only the last stand should have this jumper. Remove if installed on any of the other stands. Remove using a pair of tweezers. For convenience, slide the jumper over its so its only attached to one post will keep it from getting lost.



Stand Address set to 3, termination jumper installed

- 2) Using the Ethernet cables , wire the system as shown in the diagram below.

Important: DO NOT connect two Master stands "Remote Control" RJ45 outputs together . It must always go, as shown in the diagram below:

- USB converter box to Master Stand's 1 "Remote Control"
- Master Stand's 1 "Stand" to RJ45 Splitter
- RJ45 Splitter Output 1 to Slave Stand 2 "Stand" input
- RJ45 Splitter Output 2 to Master Stand 3 "Remote Control" input
- Master Stand's 3 "Stand" to Slave Stand's 4 "Stand" , or RJ45 splitter if more than 4 stands are daisy-chained

- 3) Connect the 3 pin XLR to the 'Power" input for each stand and apply power. Check that the **Red** power light is on for each stand
- 4) Once the Stands are properly cabled and power applied, lastly connect the RJ45/Ethernet cable to the USB/RS485 converter box. Plug the USB end of the converter box into the USB port on the PC

Daisy-Chaining multiple Stands -- Setup Diagram

Diagram below is for 4 stands daisy-chained, but can be extended up to 8 stands

